

## ABT **POWER S**

### Audi RS6\_4G05\_300 Avant 4.0l TFSI to app. 515/(700) kw/(bHP)

Stand: 11.03.2015

**Base:** v8 cylinder otto engine with gasoline direct injection

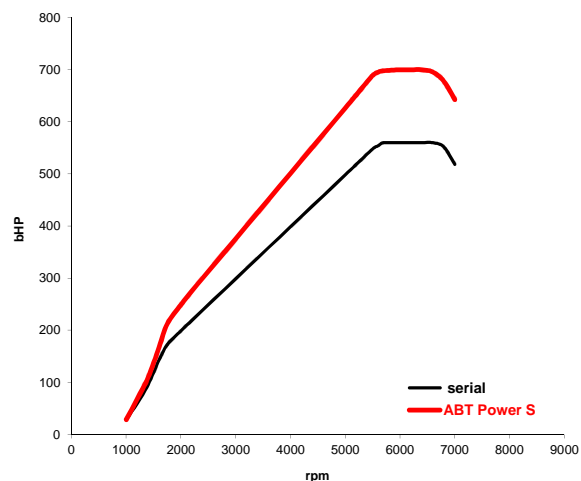
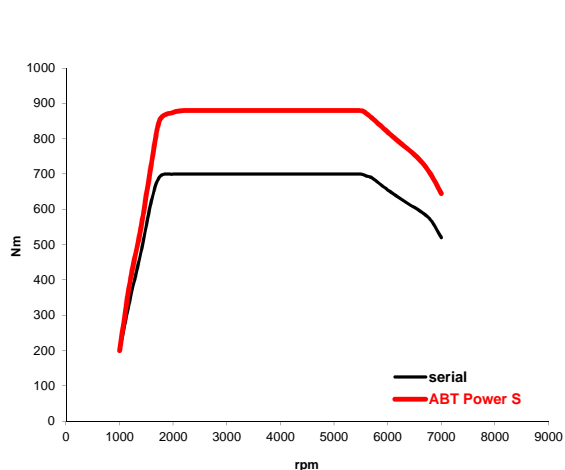
**Engine type code:** CWUB  
**Constructive change:** ABT-Engine-Control, ABT exhaust system

#### Base

<b>Bore:</b>	84,5	mm
<b>Stroke:</b>	89	mm
<b>Power:</b>	412/(560)	kw/(bHP)
at:	5700-6600	rpm
<b>Torque:</b>	700	Nm
at:	1750-5500	rpm
<b>Top Speed:</b>	250	km/h
<b>0-100 km/h:</b>	3,9	s
<b>CO<sub>2</sub>-emission:</b>	223	g/km
<b>CO<sub>2</sub>-emission per bHP:</b>	0,40	g/(km * bHP)
<b>Drive / Transmission:</b>	quattro, automatic, 8-gear	

#### ABT **POWER S**

<b>Bore:</b>	84,5	mm
<b>Stroke:</b>	89	mm
<b>Power:</b>	515/(700)	kw/(bHP)
at:	5700-6600	rpm
<b>Torque:</b>	880	Nm
at:	1750-5500	rpm
<b>Top Speed:</b>	300	km/h
<b>0-100 km/h:</b>	3,4	s
<b>CO<sub>2</sub>-emission:</b>	223	g/km
<b>CO<sub>2</sub>-emission per bHP:</b>	0,32	g/(km * bHP)
<b>Drive / Transmission:</b>	quattro, automatic, 8-gear	



**Fuel type:** ROZ 102  
**Emission standard:** EU6 (fulfills AU-regulations)

**Order-No.:** 4G05 140 700 CWUB/1

**For checking availability of modification, please let us know the ECU number prior to placing an order!**

- Details about driving performances are approximate values without obligation which are established on ABT test vehicles and may vary depending on tyres and equipment of vehicle and ambience conditions like air pressure and temperature
- Errors as well as alterations in price and technology excepted
- Additional alterations to the vehicle which have indirect or direct influence on our deliveries and rendered services void all warranty claims to Abt Sportsline
- Our applicable valid terms and conditions apply