

ABT **POWER S**

Audi RS6_4G05_305 Avant 4.0l TFSI to app. 515/(700) kw/(bHP)

Stand: 11.03.2015

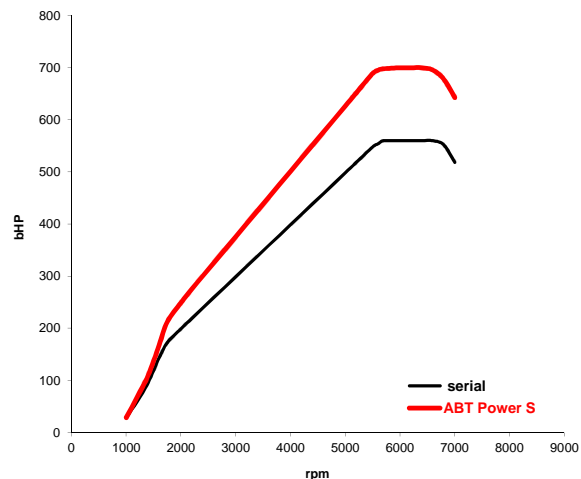
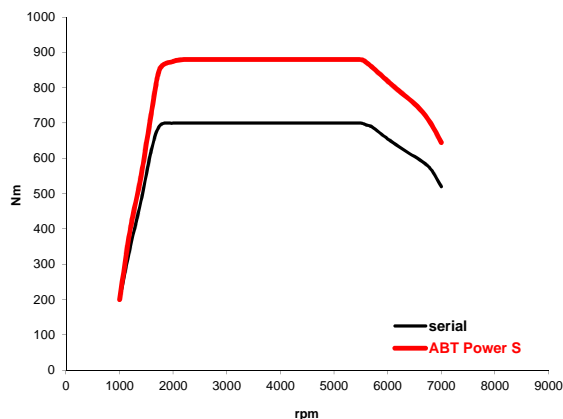
Base: v8 cylinder otto engine with gasoline direct injection

Engine type code: CWUB
Constructive change: ABT-Engine-Control, ABT exhaust system

Base		
Bore:	84,5	mm
Stroke:	89	mm
Power:	412/(560)	kw/(bHP)
at:	5700-6600	rpm
Torque:	700	Nm
at:	1750-5500	rpm
Top Speed:	305	km/h
0-100 km/h:	3,9	s
CO₂-emission:	223	g/km
CO₂-emission per bHP:	0,40	g/(km * bHP)
Drive / Transmission:	quattro, automatic, 8-gear	

ABT POWER S		
Bore:	84,5	mm
Stroke:	89	mm
Power:	515/(700)	kw/(bHP)
at:	5700-6600	rpm
Torque:	880	Nm
at:	1750-5500	rpm
Top Speed*:	305	km/h
0-100 km/h:	3,4	s
CO₂-emission:	223	g/km
CO₂-emission per bHP:	0,32	g/(km * bHP)
Drive / Transmission:	quattro, automatic, 8-gear	

* With dynamic package plus



Fuel type: ROZ 102
Emission standard: EU6 (fulfills AU-regulations)

Order-No.: 4G05 140 700 CWUB/2

For checking availability of modification, please let us know the ECU number prior to placing an order!

- Details about driving performances are approximate values without obligation which are established on ABT test vehicles and may vary depending on tyres and equipment of vehicle and ambience conditions like air pressure and temperature
- Errors as well as alterations in price and technology excepted
- Additional alterations to the vehicle which have indirect or direct influence on our deliveries and rendered services void all warranty claims to Abt Sportsline
- Our applicable valid terms and conditions apply